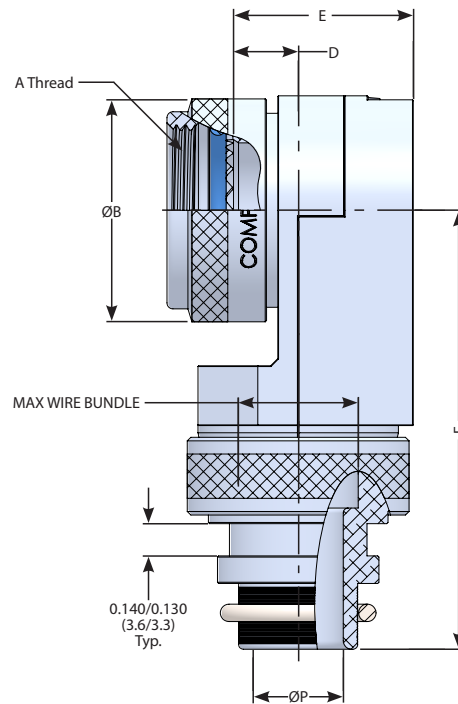


Series 49- EMI/RFI Memory Ring Shrink Boot Adapter, Screened, Standard Rotatable Coupling



CP A 49 7 W - 12 03 - A1 -VG0

Compaero Identifier

Connector Interface

See Page 4 for Details

Series Identifier

Angle

7= Ultra-Low Profile Split 90°

Material & Finish

See Page 5 for details

Shrink Boot Option

Omit for no boot - See website for details

Memory Ring

Omit for none - See Page 18 for details

AI - Ring for single AWG braid

BI - Ring for double 36 AWG braid

Cable Entry

See table 2

Shell Size

See table 1

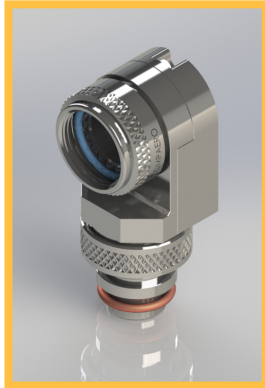


Table 1 Shell Size

SHELL SIZE	F MAX		D REF.		E MAX		MAX WIRE BUNDLE	
	in	mm	in	mm	in	mm	in	mm
08/09	1.780	45.2	0.340	8.6	0.681	17.3	0.250	6.4
10/11	1.940	49.3	0.270	6.9	0.731	18.6	0.375	9.5
12/13	1.940	49.3	0.270	6.9	0.731	18.6	0.375	9.5
14/15	2.010	51.1	0.280	7.1	0.831	21.1	0.500	12.7
16/17	2.060	52.3	0.420	10.7	0.981	24.9	0.625	15.9
18/19	2.090	53.1	0.640	16.3	1.181	30.0	0.625	15.9
20/21	2.090	53.1	0.640	16.3	1.181	30.0	0.625	15.9
22/23	2.240	56.9	0.540	13.7	1.181	30.0	0.750	19.1
24/25	2.240	56.9	0.540	13.7	1.181	30.0	0.750	19.1

Table 2 Entry Size

ENTRY SIZE	ØP	
	in	mm
02	0.250	6.4
32	0.312	7.9
03	0.375	9.5
33	0.437	11.1
04	0.500	12.7
05	0.625	15.9
06	0.750	19.1

inches millimeters
Tolerance ±0.015±0.4

Table 3 Interface Data

A INTERFACE		
SHELL SIZE	A THREAD	ØB MAX
		in mm
08	1/2-20 UNF	0.65 16.5
10	5/8-24 UNEF	0.77 19.6
12	3/4-20 UNEF	0.94 23.9
14	7/8-20 UNEF	1.02 25.9
16	1-20 UNEF	1.21 30.7
18	1 1/16-18 UNEF	1.23 31.2
20	1 3/16-18 UNEF	1.36 34.5
22	1 5/16-18 UNEF	1.48 37.6
24	1 7/16-18 UNEF	1.73 43.9

F INTERFACE		
SHELL SIZE	A THREAD	ØB MAX
		in mm
08	7/16-28 UNEF	0.65 16.5
10	9/16-24 UNEF	0.77 19.6
12	11/16-24 UNEF	0.89 22.6
14	13/16-20 UNEF	1.02 29.2
16	15/16-20 UNEF	1.15 29.2
18	1 1/16-18 UNEF	1.23 31.2
20	1 3/16-18 UNEF	1.36 34.5
22	1 5/16-18 UNEF	1.48 37.6
24	1 7/16-18 UNEF	1.73 43.9

H INTERFACE		
SHELL SIZE	A THREAD	ØB MAX
		in mm
09	M12x1.0 - 6 H	0.77 19.6
11	M15x1.0 - 6 H	0.82 20.8
13	M18x1.0 - 6 H	0.94 23.9
15	M22x1.0 - 6 H	1.07 26.2
17	M25x1.0 - 6 H	1.21 30.7
19	M28x1.0 - 6 H	1.36 34.5
21	M31x1.0 - 6 H	1.48 37.6
23	M34x1.0 - 6 H	1.60 40.6
25	M37x1.0 - 6 H	1.70 43.2